

IHC FUNDEX Equipment®

Specialist in drilling and piling equipment



The technology innovator.

Multifunctional foundation rig

IHC Fundex Equipment designs, produces and supplies multifunctional foundation rigs in various sizes and with the accompanying accessories. Half a century of knowledge and experience in the field of the different foundation techniques lies behind the development of the products. Continuous product innovation takes place thanks to the good collaboration with national and international clients. Design, production and assembly all take place in Goes, The Netherlands. The service department consists of very experienced technicians who carry out service and repairs to various makes and types of foundation rigs the world over.

The IHC Fundex foundation rig:

- drives the rotary head and pile-driving hammer directly, thanks to the integrated hydraulic system;
- complies with the latest emission requirements;
- has high stability due to a low centre of gravity;
- can be set up quickly and independently even where space is limited;
- is fitted with a PLC with extensive diagnostic possibilities;
- has a relatively low weight due to the use of high grade steel;
- has the big advantage that the cables remain reeved during transport;
- is available in a range of standard sizes, including the F2200, F2800 and F3500 rigs.



F2200 multifunctional foundation rig

The IHC Fundex 2200, or more simply the F2200, is the basic model in the range of IHC Fundex Equipment multifunctional foundation rigs. The F2200 is used for a variety of drilling and pile-driving methods such as soil displacement drilling, CFA drilling, cast-in-situ and pre-cast pile-driving.

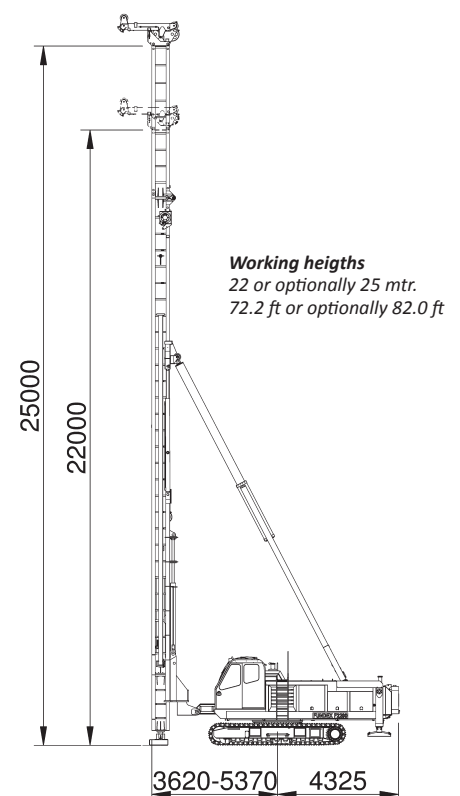
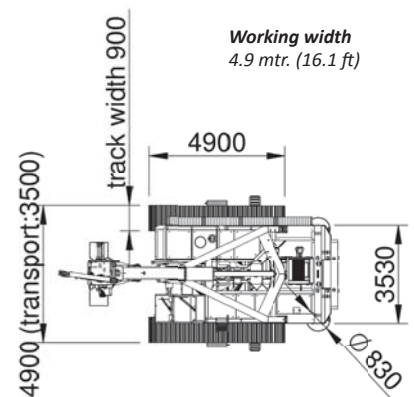
The advantages of the F2200 multifunctional foundation rig are:

- the leader can be folded down;
- it is often not necessary to dismantle the rotary head or hammer while transporting;
- the strong tubular leader is suitable for torque of 250 kNm over the entire length.

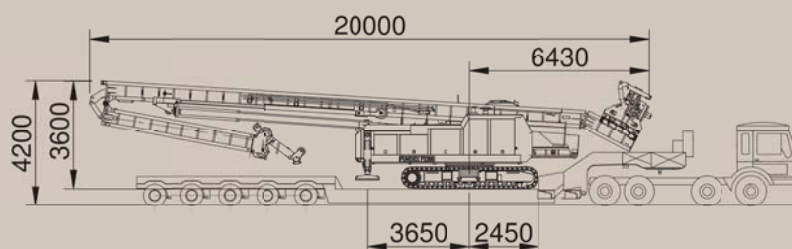
IHC Fundex F2200

Technical specifications F2200

Engine	DEUTZ V6
Engine power	450 hp / 330 kW
Hydraulic pump	Bosch-Rexroth, max. 400 - 550 l/min. at 320 bar
Winches	1x 15 tonnes (pull up) 1x 10 tonnes (pull down or pile winch) 1x 3 tonnes (auxiliary winch, if required for extending arm) 1x 0.9 tonnes (optional, lift winch)
Pull down capacity	20 tons
Pull up capacity	60 tons (optional 80 tons)
Length of leader	standard 22 metres (72.2 ft) optional 25 metres (82 ft)
Sliding table	has travel of 1,750 mm (5.7 ft)
Transport weight	74.5 tons (164.244 lbs) incl. ballast weight and FDE 25 rotary head 68 tons (149.914 lbs) incl. ballast weight, excl. FDE 25 rotary head 53 tons (116.844 lbs) excl. ballast weight, excl. FDE 25 rotary head
Specific options	extending arm at the top of the leader and a cabin with airco.
General options	automatic greasing; hydraulically driven lift with remote control; monitoring and recording system for the drilling or pile-driving process; wireless camera system; remote diagnostics between the service department of IHC Fundex and the foundation rig; various under guidance possibilities.



Transport dimensions
(excluding rotary head or impact hammer)
Length 20 mtr. (65.6 ft)
Width 3.5 mtr. (11.5 ft)
Height 3.5 mtr. (11.5 ft)



No rights may be derived from the specifications given in this brochure since changes to the specifications may be made at any time without notice as a result of product changes or updates. All specifications are stated with reservations for conversion or printing errors.



F2800 multifunctional foundation rig

The IHC Fundex 2800, or more simply the F2800, is the medium size model in the range of IHC Fundex Equipment multifunctional foundation rigs. The F2800 is used for a variety of drilling and pile-driving methods such as soil displacement drilling, CFA drilling, cast-in-situ and pre-cast pile-driving.

The advantages of the F2800 multifunctional foundation rig are:

- the extension pieces for the leader are fed in from the bottom, which is beneficial in limited spaces;
- stability is high thanks to having both front and rear supports as well as a low centre of gravity;
- the strong tubular leader is suitable for torque of 470 kNm over the entire length.

IHC Fundex F2800

Technical specifications F2800

Engine	DEUTZ V8
Engine power	600 hp / 440 kW
Hydraulic pump	Bosch-Rexroth, max. 550 - 700 l / min. at 320 bar
Winches	1x 15 tonnes (vertical movement of the leader) 1x 10 tonnes (pull up) 1x 10 tonnes (pull down or pile winch) 1x 6 tonnes (auxiliary winch for rotating JIB) 1x 1.5 tonnes (auxiliary winch) 1x 0.9 tonnes (lift winch)
Pull down capacity	40 tons
Pull up capacity	80 tons
Length of leader	minimum 21.5 metres (70.5 ft) standard 28 metres (91.9 ft) optional 31 metres (101.7 ft)
Sliding table	has travel of 1,200 mm (3.9 ft)
Transport weight	68 tons (149.914 lbs) incl. 1 ballast weight, excl. rotary head 63 tons (138.891 lbs) excl. ballast weight and excl. rotary head 50 tons (110.231 lbs) excl. ballast weight, tracks and rotary head
Specific options	a hydraulic rotating JIB with lifting capacity of 6 tons at the top of the leader.
General options	automatic greasing; hydraulically driven lift with remote control; monitoring and recording system for the drilling or pile-driving process; wireless camera system; remote diagnostics between the service department of IHC Fundex and the foundation rig; various under guidance possibilities.

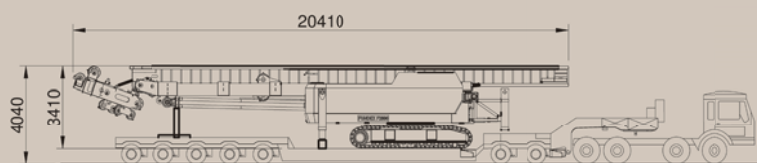
Transport dimensions

(excl. pull down frame and front counterweight)

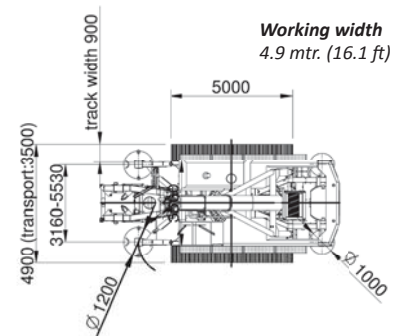
Length 20.4 mtr. (66.9 ft)

Width 3.5 mtr. (11.5 ft)

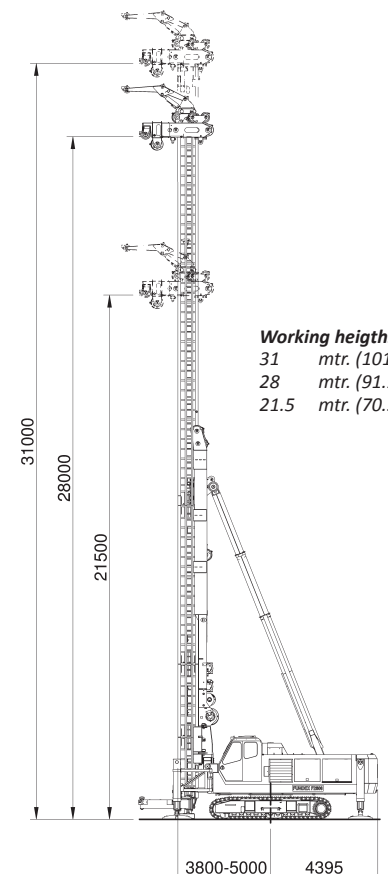
Height 3.5 mtr. (11.5 ft)



No rights may be derived from the specifications given in this brochure since changes to the specifications may be made at any time without notice as a result of product changes or updates. All specifications are stated with reservations for conversion or printing errors.



Working width
4.9 mtr. (16.1 ft)



Working heights

31 mtr. (101.7 ft)

28 mtr. (91.9 ft)

21.5 mtr. (70.5 ft)



F3500 multifunctional foundation rig

The IHC Fundex 3500, or more simply the F3500, is one of the larger machines in the range of IHC Fundex Equipment multifunctional foundation rigs. The F3500 is used for a variety of drilling and pile-driving methods such as soil displacement drilling, CFA drilling, cast-in-situ and pre-cast pile-driving.

The advantages of the F3500 multifunctional foundation rig are:

- the cabin that can be swivelled out provides a good view of the work;
- the extension pieces for the leader are fed in from the bottom, which is beneficial in limited spaces;
- stability is high thanks to having both front and rear supports as well as a low centre of gravity;
- the strong tubular leader is suitable for torque of 470 kNm over the entire length.

IHC Fundex F3500

Technical specifications F3500

Engine	DEUTZ 6 cylinder
Engine power	280 hp / 205 kW
Hydraulic pump	Bosch-Rexroth, max. 275 - 300 l/min. at 320 bar
Winches	1x 15 tonnes (vertical movement of the leader) 1x 12.5 tonnes (pull up) 1x 12.5 tonnes (pull down or pile winch) 1x 6 tonnes (auxiliary winch for rotating JIB) 1x 5 tonnes (pile winch) 1x 1.5 tonnes (auxiliary winch) 1x 0.9 tonnes (lift winch)
Pull down capacity	50 tons
Pull up capacity	100 tons with 35 metres long leader 80 tons if 40 metres
Length of leader	minimum 25 metres (82 ft) standard 35 metres (114.8 ft) optional 40 metres (131.2 ft)
Sliding table	has travel of 1,500mm (4.9 ft)
Transport weight	79 tons (174.165 lbs) incl. 1 ballast weight, excl. rotary head 74 tons (163.142 lbs) excl. ballast weight and rotary head 62 tons (136.686 lbs) excl. ballast weight, tracks and rotary head
Specific options	external power pack for driving the rotary head and a hydraulic rotating JIB with lifting capacity of 6 tons at the top of the leader.
General options	automatic greasing; hydraulically driven lift with remote control; monitoring and recording system for the drilling or pile-driving process; wireless camera system; remote diagnostics between the service department of IHC Fundex and the foundation rig; various under guidance possibilities.

Transport dimensions

(excl. pull down frame and front counterweight)

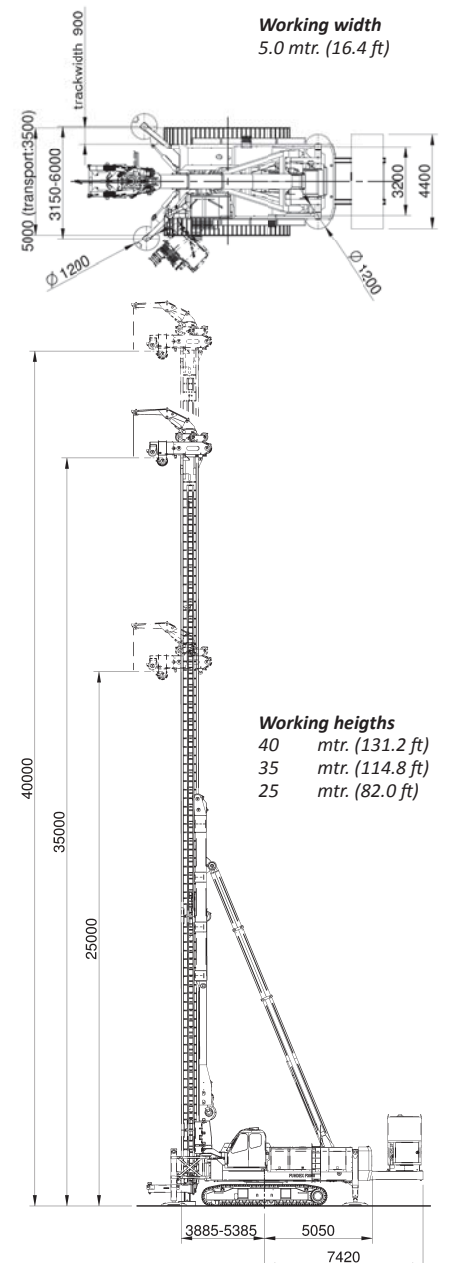
Length 20.4 mtr. (66.9 ft)

Width 3.5 mtr. (11.5 ft)

Height 3.5 mtr. (11.5 ft)



No rights may be derived from the specifications given in this brochure since changes to the specifications may be made at any time without notice as a result of product changes or updates. All specifications are stated with reservations for conversion or printing errors.





Hydraulic rotary heads (FDE)

IHC Fundex Equipment supplies a wide range of hydraulically driven rotary heads. These are used for a variety of different drilling methods such as soil displacement and CFA drilling. The technique used depends on the nature of the soil. Working up to a diameter of no less than one and a half metres is possible when using the CFA technique. IHC Fundex rotary heads stands out by a combination of high torque combined to a dynamic drilling speed.

IHC Fundex Equipment has built up a major lead in the field of heavy soil displacement drilling. This experience is used when designing and improving the rotary heads. A major advantage is that the rotary heads can also be deployed on other foundation rigs and they can be supplied separately or in combination with an FPP power pack unit. The range consists of rotary heads with a torque of 90 kNm to a maximum of 470 kNm. Rotary heads can also be supplied with a hydraulic clamping system for use when installing longer piles or when working in areas with limited space.

IHC Fundex FDE, FPP & FVE

Hydraulic power packs (FPP)

The IHC Fundex Equipment range of hydraulic power packs consists of models with power varying from 400 hp to 770 hp. The power packs are constructed according to a practical modular system. The newest Volvo engines are used thus complying with the legally prescribed emission requirements. IHC Fundex Equipment power packs are multifunctional and are used for driving hydraulic rotary heads, pile-driving hammers and vibro hammers. Provisions such as openings for a forklift truck or wheeled loader, various lifting points, interior lighting and door panels with oil-resistant insulating materials are standard. The control unit is compact and simple. If required the power packs can also be run on biologically degradable oil. A pre-heating system or additional cooling capacity for tropical conditions can also be supplied.



Hydraulic ring vibrators (FVE)

IHC Fundex Equipment can supply a range of hydraulic ring vibrators. These can be divided into two categories. Conventional ring vibrators (FVE 50HD and FVE 60): these are used when using the cast-in-situ technique to retract tubes and are used in combination with a pile-driving hammer. The advantage of the conventional ring vibrator is the low own weight in combination with the enormous impact force and the large amplitude. The second category is the newest generation of ring vibrators (FVE 36DRF). As well as retracting the tubes when used in the cast-in-situ technique these can also be used for installing the tube so that a pile-driving hammer is no longer needed. In that case the ring vibrator together with the pull down system installs the tube.



No rights may be derived from the specifications given in this brochure since changes to the specifications may be made at any time without notice as a result of product changes or updates. All specifications are stated with reservations for conversion or printing errors.



Specials & custom-made equipment

IHC Fundex Equipment regularly develops special machines and accessories to order for national and international clients. The many years of experience in the wide-ranging field of foundation techniques and machines allows us to develop customized machines that offer the best solution for complex projects. IHC Fundex Equipment has the necessary engineering capacity for this in house.

Among the items developed and supplied by IHC Fundex Equipment are the following:

- special machines for foundation work in areas with limited space and height;
- specially adapted cranes with leader lengths up to 50 metres;
- offshore leaders, for such uses as breaking rocks;
- hydraulic powered workover rig for applications in oil, gas and salt industry.

IHC Fundex Equipment & service



Service does mean service

IHC Fundex Equipment is known for quality, flexibility and service. Any delay has an enormous impact on a contracting company. This is one of the reasons that the organisation of IHC Fundex Equipment has been set up to be as flexible as possible. Thanks to short internal lines of communication it is possible to react quickly and adequately to requests for service anywhere in the world. An experienced and motivated service team is involved with every delivery and also carries out the necessary maintenance and repair work to the various foundation rigs. Furthermore, IHC Fundex Equipment also trains the users so that they can operate and maintain the machines themselves.

No rights may be derived from the specifications given in this brochure since changes to the specifications may be made at any time without notice as a result of product changes or updates. All specifications are stated with reservations for conversion or printing errors.



Head office

The Netherlands
Slidrecht

Regional offices

EUROPE The Netherlands

Alblasserdam
Apeldoorn
Delfgauw
Dordrecht
Goes
Hardinxveld-Giessendam
Kinderdijk
Raamsdonksveer
Slidrecht

United Kingdom
Blandford Forum

France
Verberie

ASIA
P.R. of China
Beijing
Shanghai
Tianjin

SOUTH EAST ASIA
Rep. of Singapore
Singapore

India
Mumbai

MIDDLE EAST
United Arab Emirates
Dubai

Nigeria
Lagos

NORTH AMERICA
USA
Houston, TX
Lafayette, LA
Wayne, NJ

SOUTH AMERICA
Brazil
Rio de Janeiro

Engineering & Production

EUROPE
The Netherlands
Hardinxveld-Giessendam
Heusden
Kinderdijk
Krimpen aan den IJssel
Rotterdam
Slidrecht

United Kingdom
Stocksfield

Croatia
Rijeka

Slovakia
Komarno

AFRICA
South Africa
Cape Town

ASIA
P.R. of China
Dalian
Guangzhou
Shanghai

SOUTH EAST ASIA
Malaysia
Kuala Lumpur

IHC Fundex Equipment B.V.

P.O. Box 83, 4460 AB Goes
Houtkade 50, 4463 AC Goes
The Netherlands

T +31 113 23 29 00
F +31 113 21 26 30
sales.fe@ihcmerwede.com
www.ihcmerwede.com | www.ihcfundex.com